

A background network diagram consisting of numerous nodes (circles) of varying sizes and colors (blue, grey, light blue) connected by thin lines, creating a complex web of connections.

**GCL<sup>®</sup>**

BUSINESS INTELLIGENCE

**Empowering Businesses,  
Simplifying Growth.**



**GCL**<sup>®</sup>  
BUSINESS INTELLIGENCE

200+ Global Projects  
100+ Industries Served  
15+ Countries Reached  
50,000+ User Engagements

## Scale Your Business Intelligently with GCL BI

- At GCL BI, we transform complex challenges into smart digital solutions that empower businesses worldwide.
- From ERP systems to web portals, cybersecurity, and digital marketing, we deliver innovation with precision and reliability.
- With a presence in 55 countries and hundreds of successful projects, our focus is on trust, compliance and measurable growth.
- We simplify technology so you can focus on scaling operations and achieving global success.
- Partner with us to unlock efficiency, resilience, and long-term transformation.



# Table of Contant

**About GCL BI**

**Our Mission & Vision**

**Software & Automation Solutions**

**Digital Growth & Branding**

**Why Choose Us**

**Contact Information**

A close-up, high-angle shot of a person's hands typing on a silver laptop keyboard. The laptop screen displays a code editor with a dark theme and blue accents. The text is overlaid on a semi-transparent dark grey rounded rectangle.

# About Us

At GCL BI, we empower organizations to operate smarter by delivering cutting-edge ERP, web development, cybersecurity, and digital marketing solutions tailored to their unique needs. With a presence in 55 countries and a proven record of successful projects across industries, we combine technology, creativity, and compliance expertise to help businesses achieve sustainable growth.

Our focus is on quality, trust, and measurable impact, making us a reliable partner for startups and enterprises alike. By simplifying complex technology, we enable our clients to scale operations confidently, strengthen their global presence, and unlock long-term success.

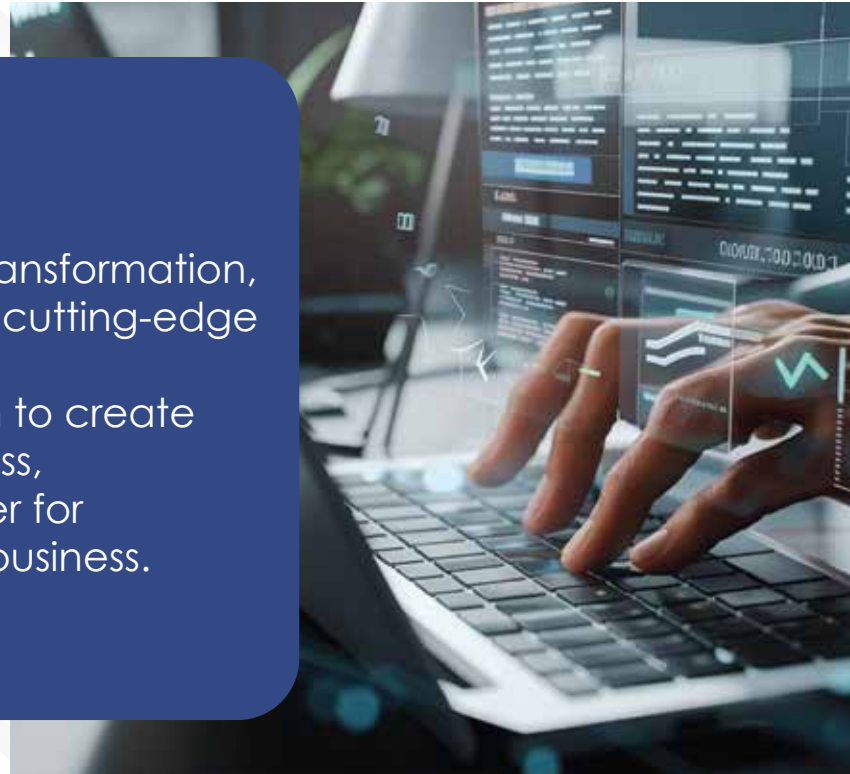


## Our Mission

To simplify technology and deliver smart, scalable, and secure solutions that enhance efficiency, strengthen brand presence, and accelerate business growth across industries worldwide. We are committed to empowering startups and enterprises alike with innovative ERP, web, and digital solutions that drive measurable success.

## Our Vision

To become a global leader in digital transformation, empowering businesses of all sizes with cutting-edge technology, strategic marketing, and compliance-driven innovation. We aim to create long-term value and sustainable success, positioning GCL BI as the trusted partner for organizations navigating the future of business.



**GCL**<sup>®</sup>  
BUSINESS INTELLIGENCE



**GCL<sup>®</sup>**  
BUSINESS INTELLIGENCE

**Our Services  
Software & Automation  
Solutions**



## Custom Website & Portal Development

We build secure, responsive, and scalable websites and portals tailored to your business needs. Our solutions integrate advanced features, intuitive design, and seamless functionality to enhance customer engagement, streamline workflows, and strengthen your digital presence.



## CRM Solutions for Any Industry

Our industry agnostic CRM platforms empower businesses to manage customer relationships with precision. From lead tracking to sales automation and service management, we deliver customizable solutions that improve efficiency, drive conversions, and foster long term loyalty.



## POS & Inventory Management

We provide robust point of sale and inventory systems designed to simplify transactions, monitor stock levels in real time, and optimize supply chain operations. Our solutions help businesses reduce losses, improve accuracy, and maximize profitability.



## Hotel Management Software

Tailored for the hospitality sector, our software streamlines reservations, billing, housekeeping, and guest services. By automating daily operations, hotels can deliver superior guest experiences while improving efficiency and revenue management.



## Textile ERP Systems

Our specialized ERP solutions for textile manufacturers integrate production planning, resource allocation, compliance tracking, and financial management. Designed for scalability, they help textile businesses achieve operational excellence and global competitiveness.



## Banking & Financial Software

We deliver secure, compliant, and scalable platforms for financial institutions. From transaction processing to risk analysis and regulatory reporting, our solutions ensure accuracy, transparency, and trust in every financial operation.

A hand is shown holding a glowing blue circular interface with the letters 'HR' in the center. The interface is surrounded by various icons representing HR functions: a headset, a person icon, a magnifying glass, a bar chart, and a document. The background is dark blue with faint grid lines and light effects.

## HR & Payroll Management

Our comprehensive HR and payroll systems automate workforce administration, salary processing, and compliance reporting. With intuitive dashboards and error free calculations, businesses can manage employees efficiently while ensuring transparency and accountability.

A hand is shown holding a glowing blue circular interface with the letters 'LM' in the center. The interface is surrounded by various icons representing LMS functions: a folder, a person at a computer, a gear, and a document. The background is dark blue with faint grid lines and light effects.

## Learning Management Systems (LMS)

We design interactive LMS platforms that empower organizations and educational institutions to deliver training, track learner progress, and improve outcomes. Our solutions support scalability, engagement, and measurable learning success.



**GCL**<sup>®</sup>


BUSINESS INTELLIGENCE

# Our Services Digital Growth & Branding



## Digital Marketing & SEO Campaigns

We craft data driven marketing strategies that boost visibility, improve search rankings, and attract the right audience. Our SEO campaigns are designed to deliver sustainable growth and measurable impact.



## Paid Ads (Google, Facebook & Social Platforms)

Our targeted advertising campaigns maximize reach and ROI across major digital platforms. By leveraging advanced analytics and audience insights, we ensure every ad delivers measurable business results.



## Creative Content Creation

We produce compelling, brand-aligned content that resonates with audiences and strengthens digital presence. From blogs and articles to multimedia storytelling, our content strategies drive engagement and trust.



## Graphic & Brand Identity Design

We craft professional logos, visuals, and brand identities that reflect your values and vision. Our designs ensure consistency across platforms, helping businesses build recognition and long-term brand equity.

# ? Why Choose Us

## » Results You Can Measure

Every solution we deliver is backed by clear metrics, ensuring transparency, accountability, and business impact from day one.

## » Tailored Solutions, Not Templates

We design and develop software around your unique business needs—no one-size-fits-all shortcuts, just precision-built systems that work for you.

## » Global Standards, Local Expertise

With a presence in 55 countries, we combine international best practices with region-specific insights to deliver trusted, compliant solutions.

## » Reliable Timelines, Budget Control

From kickoff to deployment, our sprint plans and project governance ensure on-time delivery and cost efficiency without compromise.

## » Effortless Integration

We ensure our systems work seamlessly with your existing tools, minimizing disruption and maximizing operational continuity.

## » Scalable Growth Strategy

Our solutions evolve with your business—whether you're a startup or a global enterprise, we build for today and scale for tomorrow.



# GCL<sup>®</sup>

BUSINESS INTELLIGENCE

## Contact Us

---



+44 (0)845 548 9001



[info@gcl-bi.com](mailto:info@gcl-bi.com)



[www.gcl-bi.com](http://www.gcl-bi.com)



GCL International Ltd,  
1, St Mark Street, London,  
E1 8DA, United Kingdom